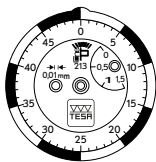


P-LINE STANDARD

Resolution 0.01 mm	01810400 (213)	01810401 (213G)	01810402 (212L)	01810403 (212GL)
Measuring range (mm)	1.5	1.5	3	3
Resolution (mm)	0.01	0.01	0.01	0.01
Dial, Ø (mm)	27	40	27	40
Stroke/revolution (mm)	0.5	0.5	1	1
Circular scale	0 ÷ 25 ÷ 50	0 ÷ 25 ÷ 50	0 ÷ 50 ÷ 100	0 ÷ 50 ÷ 100
Measuring insert length (mm)	18	18	36	36
Indication error over the measurement range (plunger retractable and extendable) MPE _{tot} (µm)	13	13	26	26
Indication error over the measurement range (retractable plunger) MPEE (µm)	10	10	20	20
Partial indication error (over 1 revolution) MPEP (µm)	6	6	12	12
Partial indication error (over 1/2 revolution) MPEP (µm)	5	5	10	10
Partial indication error (over 1/10 revolution) MPEP (µm)	3	3	6	6
Hysteresis of the indication error MPEH (µm)	3	3	7	7
Repeatability of the indication error MPER (µm)	3	3	3	3
Measurement force (N)	0.35	0.35	0.2	0.2

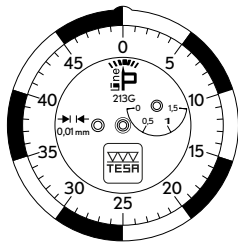
Dial reading 0.01 mm

213



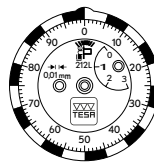
01810400

213G



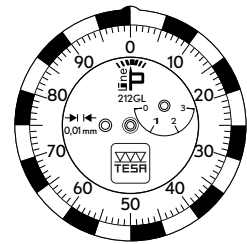
01810401

212L

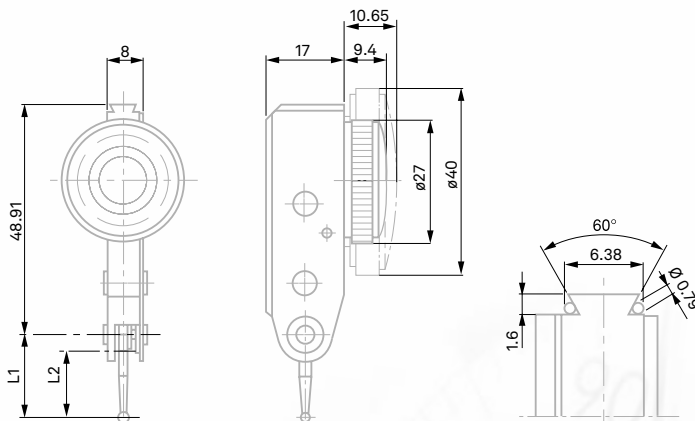


01810402

212GL



01810403



L1 and L2, see table of measuring insert, p. 12

