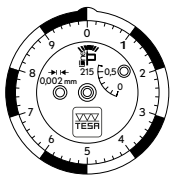


P-LINE STANDARD

Resolution 0.002 / 0.001 mm	01810404 (215)	01810405 (215G)	01810406 (215GL)	01810407 (216G)
Measuring range (mm)	0.6	0.6	1.2	0.6
Resolution (mm)	0.002	0.002	0.002	0.001
Dial, Ø (mm)	27	40	40	40
Stroke/revolution (mm)	0.1	0.1	0.2	0.1
Circular scale	0 ÷ 5 ÷ 10	0 ÷ 5 ÷ 10	0 ÷ 10 ÷ 20	0 ÷ 5 ÷ 10
Measuring insert length (mm)	18	18	36	18
Indication error over the measurement range (plunger retractable and extendable) MPE _{tot} (µm)	13	13	26	13
Indication error over the measurement range (retractable plunger) MPEE (µm)	10	10	20	10
Partial indication error (over 1 revolution) MPEP (µm)	5	5	10	5
Partial indication error (over 1/2 revolution) MPEP (µm)	3	3	6	3
Partial indication error (over 1/10 revolution) MPEP (µm)	1	1	2	1
Hysteresis of the indication error MPEH (µm)	4.5	4.5	8	4.5
Repeatability of the indication error MPER (µm)	1.5	1.5	1.5	1.5
Measurement force (N)	0.3	0.3	0.2	0.3

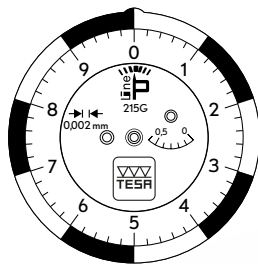
Dial reading 0.002 / 0.001 mm

215



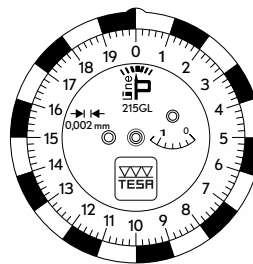
01810404

215G



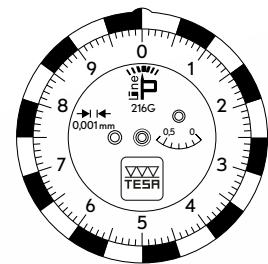
01810405

215GL

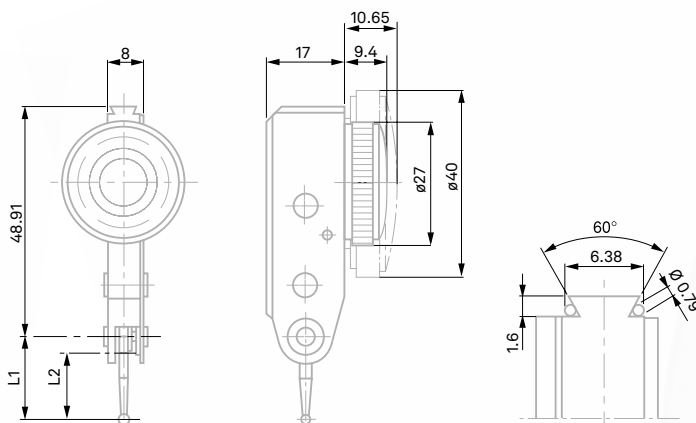


01810406

216G



01810407



L1 and L2, see table of measuring insert, p. 12

